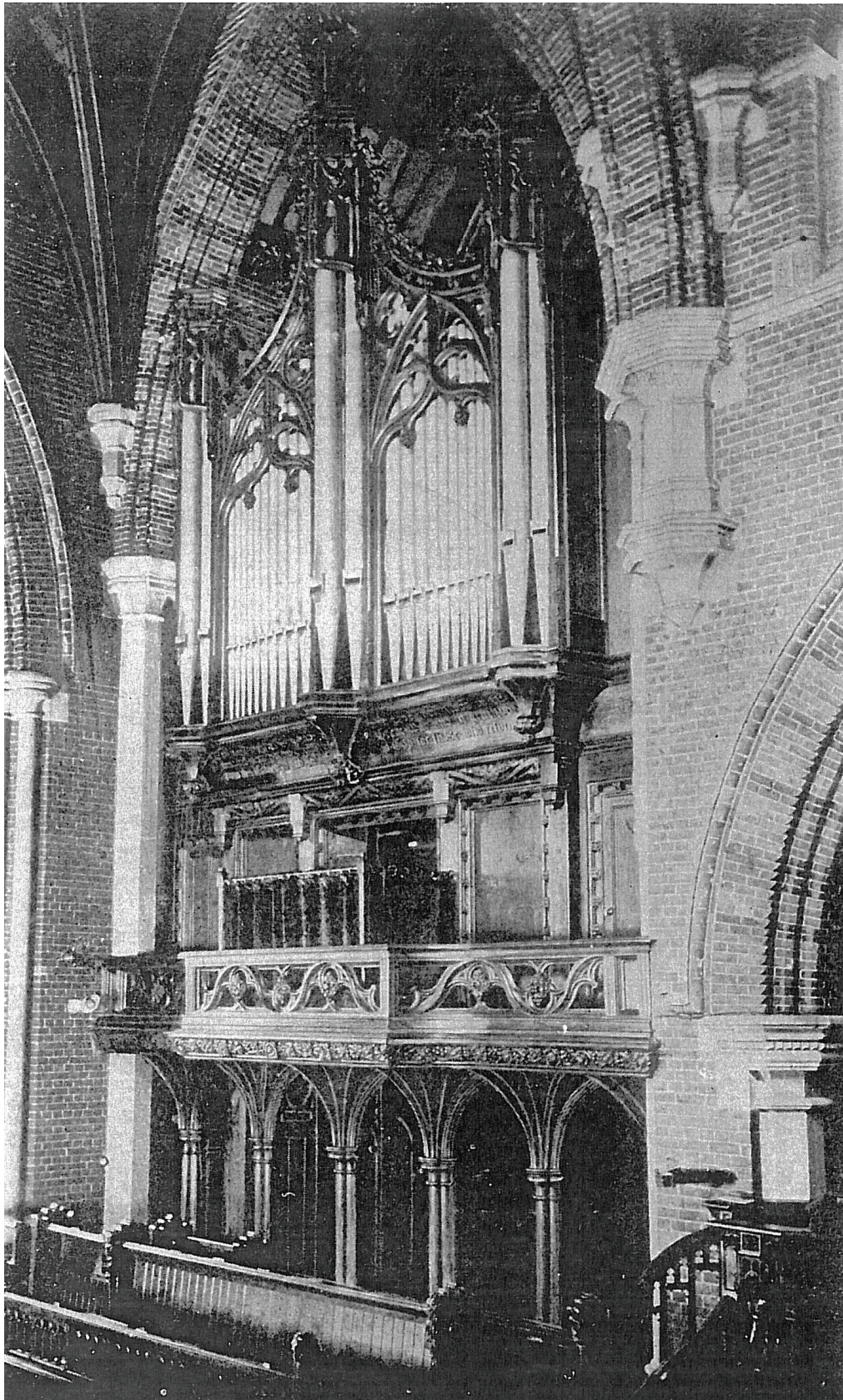


SHANGHAI CATHEDRAL



HARRISON & HARRISON
1925

SPECIFICATION.

The specification was drawn up by the builders, Messrs. Harrison & Harrison, in consultation with Ronald Hurry, Esq., Mus.Bac., Cantab. The case is of solid teak, and finely carved. There are three manuals, CC to C, 61 notes, and two and a half octaves of radiating and concave pedals, CCC to G, 32 notes ; 45 speaking stops and 15 couplers etc., making a total of 60 draw-stops.

PEDAL ORGAN, 9 Stops, 3 Couplers.

	FEET
1. Double Open Wood (to FFFF, five lowest acoustic, 20 from No. 2) .. Wood,	32
2. Open Wood "	16
3. Sub Bass "	16
4. Open Diapason .. (from No. 20) .. Metal,	16
5. Violone (from No. 10) .. "	16
6. Octave Wood .. (20 from No. 2) Wood,	8
7. Flute (20 from No. 3) .. "	8
8. Ophicleide Metal,	16
9. Posaune .. (20 from No. 8) .. "	8
<i>I. Choir to Pedal.</i>	
<i>II. Great to Pedal.</i>	
<i>III. Swell to Pedal.</i>	

CHOIR ORGAN, 10 Stops, Tremulant and 4 Couplers. (In a swell-box).

	FEET
10. Contra Viola Metal,	16
11. Viole d'Orchestre "	8
12. Viole Céleste .. (to FF) .. "	8
13. Violin Diapason "	8
14. Harmonic Flute "	8
15. Salicet "	4
16. Concert Flute "	4
17. Harmonic Piccolo "	2
18. Orchestral Bassoon "	16
19. Clarinet "	8
<i>IV. Tremulant.</i>	
<i>V. Octave.</i>	
<i>VI. Sub Octave.</i>	
<i>VII. Unison off.</i>	
<i>VIII. Swell to Choir.</i>	

No. 18 has an extra octave of pipes and is controlled by a special piston, labelled "Orchestral Hautboy, 8 ft.", and drawing Nos. V. and VII.

GREAT ORGAN, 12 Stops, 3 Couplers.

	FEET
20. Double Open Diapason Metal,	16
21. Large Open Diapason "	8
22. Small Open Diapason "	8
23. Hohl Flute Wood,	8
24. Stopped Diapason .. Metal and Wood,	8
25. Octave Metal,	4
26. Wald Flute Wood,	4
27. Octave Quint Metal,	2 $\frac{2}{3}$
28. Super Octave "	2
29. Harmonics, 17, 19, 21, 22 "	—
30. Tromba .. (harmonic trebles) .. "	8
31. Octave Tromba (" ") .. "	4
<i>IX. Reeds on Choir.</i>	
<i>X. Choir to Great.</i>	
<i>XI. Swell to Great.</i>	

SWELL ORGAN, 14 Stops, Tremulant and 1 Coupler.

	FEET
32. Lieblich Bourdon .. Wood and Metal,	16
33. Open Diapason Metal,	8
34. Lieblich Gedeckt "	8
35. Echo Gamba "	8
36. Voix Célestes (ten C) "	8
37. Gemshorn "	4
38. Lieblich Flute "	4
39. Fifteenth "	2
40. Mixture, 12, 19, 22 "	—
41. Oboe "	8
42. Vox Humana "	8
<i>XII. Tremulant.</i>	
43. Double Trumpet "	16
44. Trumpet (harmonic trebles) .. "	8
45. Clarion (" ") .. "	4
<i>XIII. Octave.</i>	

COMBINATION COUPLERS.

- XIV. Great and Pedal Combinations Coupled.*
XV. Pedal to Swell Pistons.

ACCESSORIES.

Six combination pedals to the Pedal organ.
Five combination pistons to the Choir organ.
Six combination pistons to the Great organ.
Six combination pistons to the Swell organ.
Reversible piston to No. 8.
Reversible pedal to *Great to Pedal*.
Reversible piston to *Great to Pedal*.
Reversible piston to *Swell to Great*.
Reversible foot piston to Choir *Tremulant*.
Reversible foot piston to Swell *Tremulant*.
Two balanced crescendo pedals to Choir and Swell organs.

WIND PRESSURES.

Pedal flue-work, 4 to 5 inches ; reeds, 12 inches.
Choir, 5 inches.
Great flue-work, 4 inches ; reeds, 12 inches.
Swell flue-work, Oboe and Vox Humana, 4 inches ; other reeds, 8 inches.
Action, 12 inches.

The draw-stop jambs are at an angle of 45 degrees to the keyboards. The stop-handles have solid ivory heads, the speaking stops being lettered in black, and the couplers etc. (indicated above by italics), in red. The latter are grouped with the speaking stops of the departments they augment. The combination pistons have solid ivory heads.

The builders' latest Tubular Pneumatic system is applied to all the action except the manual to pedal couplers, which are mechanical.

All trebles, and harmonic, covered and cone tuned pipes, are of spotted metal.

The organ is tuned to the new French pitch, *i.e.*, C=517 vibrations per second at 60 degrees F.

The blowing is by Discus fans and Electric Motor, by Messrs. Watkins and Watson, of London.