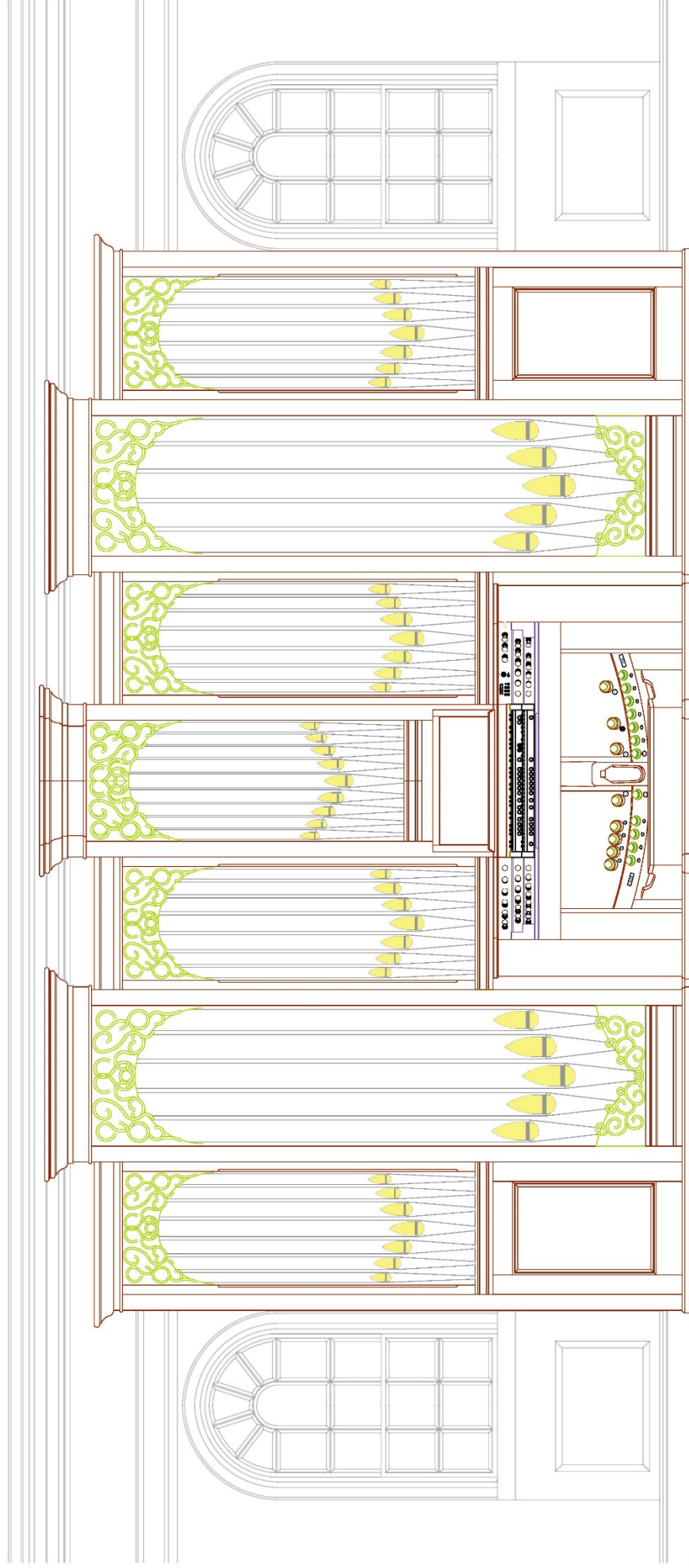


CHRIST CHURCH, ALEXANDRIA

VIRGINIA

THE ORGAN



HARRISON & HARRISON
2021

CHRIST CHURCH, ALEXANDRIA VA

THE ORGAN

PEDAL ORGAN

1.	Sub Bass		16
2.	Bourdon	(from 6)	16
3.	Principal		8
4.	Bass Flute	(from 1)	8
5.	Contra Hautboy	(from 20)	16

I Great to Pedal II Swell to Pedal

GREAT ORGAN

6.	Bourdon (wood and metal)	16
7.	Open Diapason	8
8.	Stopped Diapason	8
9.	Principal	4
10.	Harmonic Flute	4
11.	Fifteenth	2
12.	Sesquialtera	12.17 II
13.	Mixture	15.19.22.26 IV
14.	Cremona	8

SWELL ORGAN (enclosed)

15.	Gedackt(wood and metal)	8
16.	Viola	8
17.	Vox Angelica(tenor c, tuned flat)	8
18.	Gemshorn	4
19.	Mixture	15.19.22 III
20.	Contra Hautboy	16
21.	Cornopean	8
22.	Hautboy	8

*III Tremulant
IV Swell to Great*

*V Tremulant
V Octave VI Unison Off VII Sub
Octave*

COMBINATION COUPLERS

*Great & Pedal Combinations coupled
Swell on General Foot Pistons
Pedal to Swell Pistons*

ACCESSORIES

Eight general pistons (*duplicated by foot pistons*), and general cancel
Six foot pistons to the Pedal Organ
Six pistons to the Great Organ
Six pistons to the Swell Organ
Reversible pistons to all inter-departmental couplers
Reversible foot pistons to *Great to Pedal, Swell to Pedal, Cymbelstern*
Stepper, operating general pistons in sequence
128 general and 8 divisional piston memory levels
Bluetooth interface for page turning on digital devices
Balanced expression pedal to the Swell Organ
Cymbelstern with tuned bells

The manual compass is 58 notes, the pedal 30 notes
The actions are electro-pneumatic

HARRISON & HARRISON
2021