

# HAKADAL CHURCH, NORWAY



## PEDAL ORGAN

1.	Sub Bass		16
2.	Principal	(from 5)	8
3.	Bass Flute	(from 6)	8
4.	Bassoon	(from 17)	16

*I Great to Pedal*

*II Swell to Pedal*

## SWELL ORGAN

11.	Gedackt		8
12.	Salicional		8
13.	Voix Célestes	(tenor c)	8
14.	Gemshorn		4
15.	Flageolet		2
16.	Mixture		II-III
17.	Contra Oboe		16

## GREAT ORGAN

5.	Open Diapason		8
6.	Stopped Diapason		8
7.	Principal		4
8.	Chimney Flute		4
9.	Fifteenth		2
10.	Trumpet		8

*III Swell to Great*

*IV Tremulant*

*V Octave*

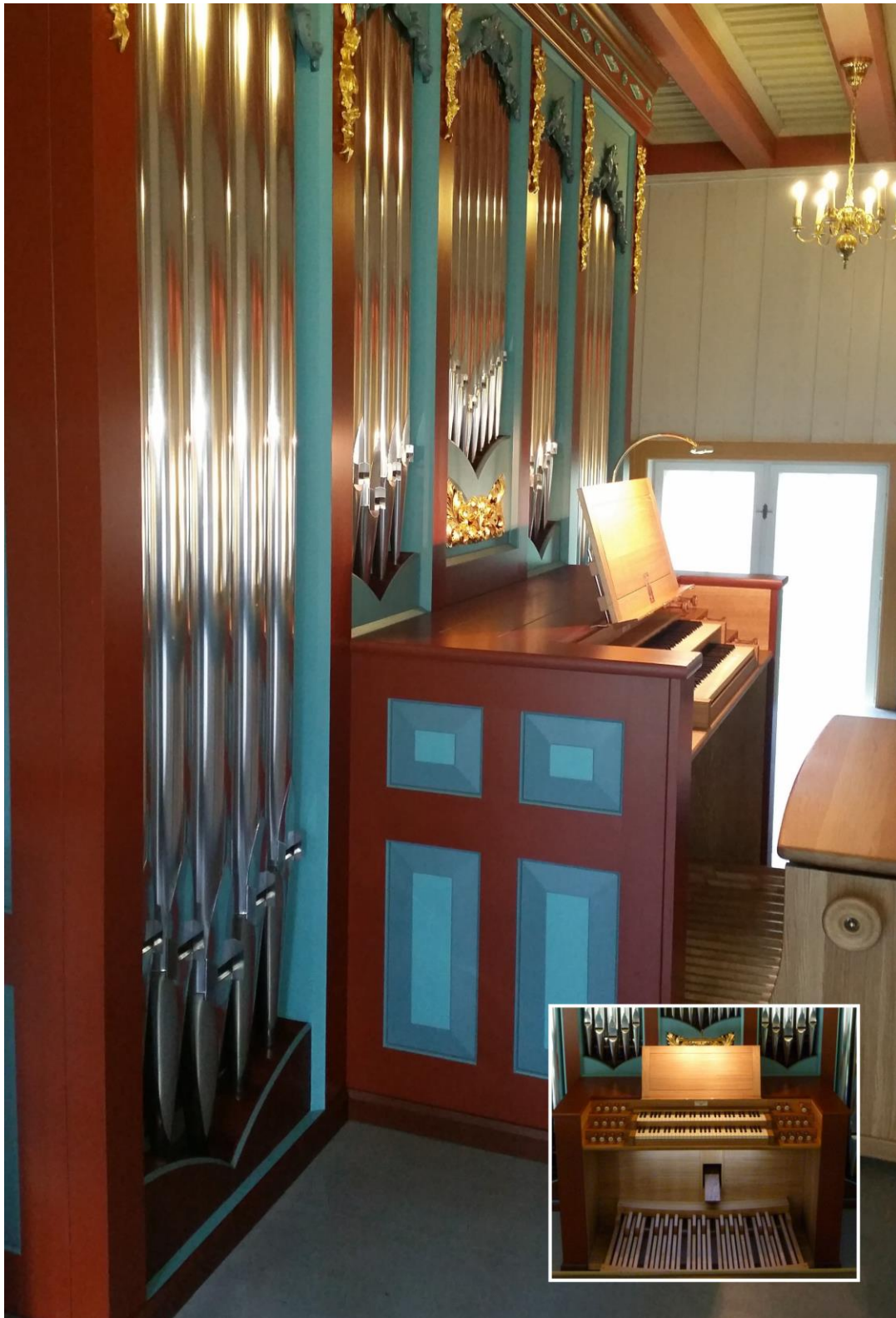
The manual compass is 61 notes

The pedal compass is 30 notes

The action is mechanical throughout

HARRISON & HARRISON  
DURHAM, ENGLAND  
2015

# HAKADAL CHURCH, NORWAY



HARRISON & HARRISON  
DURHAM, ENGLAND  
2015